



**SUNCOMBE**  
CIP, BIOWASTE & PROCESS SOLUTIONS

# Chemical Dosing Skids



Suncombe Ltd, Jade House, Lockfield Avenue, Brimsdown, Enfield, Middlesex, EN37JY, United Kingdom

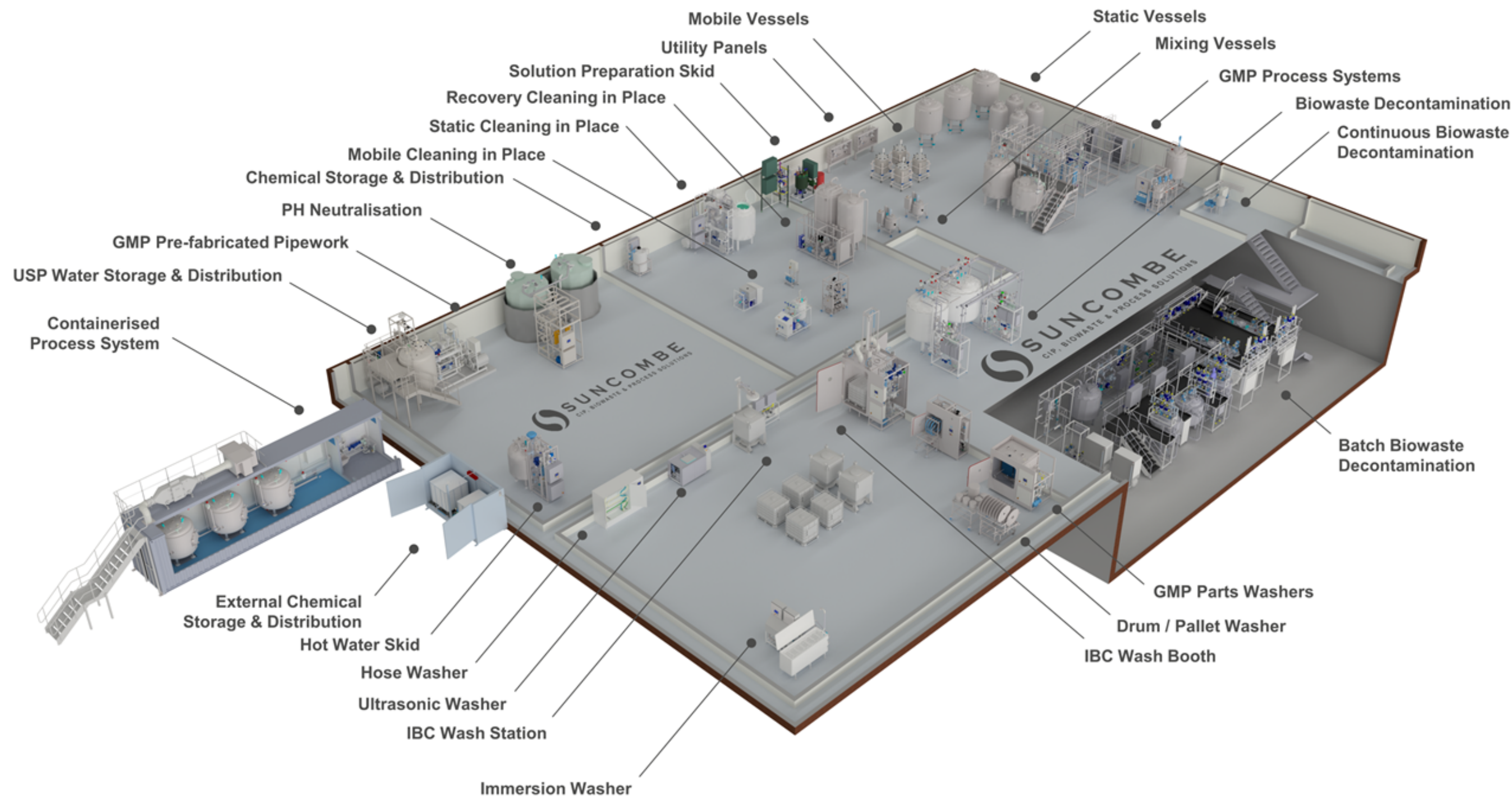
T +44(0)20-8443-3454 F +44(0)20-8443-3969 E [info@suncombe.com](mailto:info@suncombe.com) W [www.suncombe.com](http://www.suncombe.com)





# SUNCOMBE

CIP, BIOWASTE & PROCESS SOLUTIONS



## Product Portfolio



**Dosing Skids**  
Suncombe **Dosing Skids** are a robust range of heavy duty validateable skids for liquid dosing applications. Developed for use in the pharmaceutical, biotech, food, beverage, healthcare and other critical sectors, they encompass the high quality of design, manufacture and documentation required in these sectors.

- Features**
- Developed and manufactured in the United Kingdom
  - Designed for accuracy, repeatability and validation
  - Available for many liquid solutions and chemical compounds
  - Variable Speed High Accuracy Dosing control using stepper motor technology
  - High quality stainless, duplex, PE and compatible material Dosing Tanks
  - Stainless steel framework and control panels
  - 316 stainless steel pipework as standard
  - Duplex steel or plastic pipework for chemical compatibility
  - Safety Interlocks to SIL2
  - High, low and mid level sensing, indication and interlock
  - Pressure relief and safety devices
  - pH and conductivity control methodologies available
  - Risk assessment, method statements, operating instructions and full documentation
  - 2D drawings and 3D models supplied
  - Factory Acceptance Testing Included

- Manufacturing Standards**
- 304/316 stainless steel non-wetted parts and framework
  - 316 stainless steel product contact parts, 304 non-contact parts, Hastelloy, Duplex Stainless and plastic for chemical compatibility
  - T.I.G. Welding; using an argon gas purge, , carried out by technicians coded to EN 287, to Suncombe procedures coded to EN ISO 15609, tested to EN ISO 15614 Part 1.
  - Electrical and safety design EN 60204

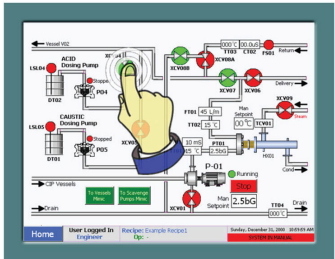


Dosing Skid 300/10

**Automation**  
Offering total flexibility with manual, semi-automatic, automatic and recipe controlled operation, they are designed to be operator friendly and simple to use whilst providing flexibility and optimisation. Reliable and robust, they have been developed over the last 55 years in co-ordination with clients operations staff, engineers and validation staff. They encompass all elements required to provide an accurate, safe, controllable, repeatable system.



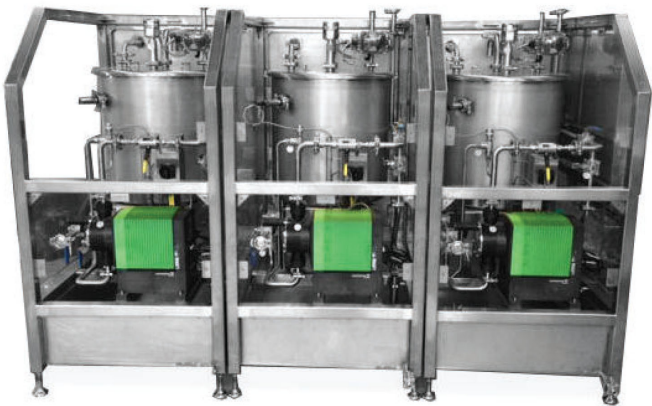
Level 1000 Basic System



Level 3000 Advanced System

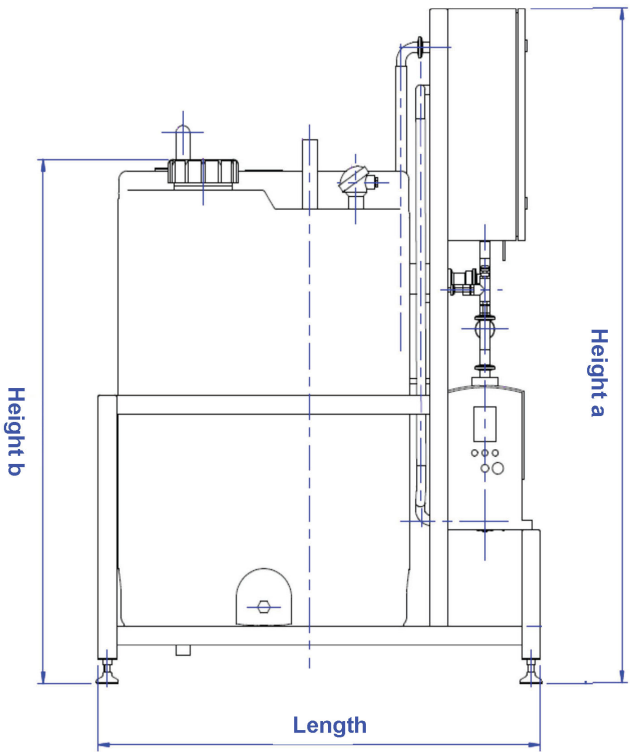


Dosing Skid 200/5

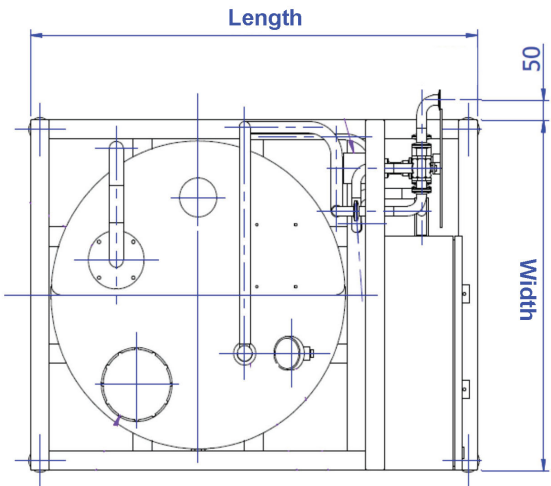


Triple Dosing Skid 50/1

**Equipment Dimensions**



Elevation View



Plan View

| Part #              | Duty Details            |                                     |                        | External Dimensions mm |        |          |          |
|---------------------|-------------------------|-------------------------------------|------------------------|------------------------|--------|----------|----------|
|                     | Storage Volume (litres) | Outlet Flowrate (litres per minute) | Outlet Pressure (barg) | Width                  | Length | Height a | Height b |
| Dosing Skid 50/1    | 50                      | 0—1                                 | 4                      | 700                    | 1100   | 1750     | 650      |
| Dosing Skid 100/3   | 100                     | 0—3                                 | 6                      | 700                    | 1100   | 1750     | 850      |
| Dosing Skid 200/5   | 200                     | 0—5                                 | 4                      | 900                    | 1300   | 1750     | 950      |
| Dosing Skid 300/10  | 300                     | 0—5                                 | 6                      | 900                    | 1300   | 1750     | 1250     |
| Dosing Skid 500/15  | 500                     | 0—15                                | 6                      | 1000                   | 1400   | 1850     | 1250     |
| Dosing Skid 1000/15 | 1000                    | 0—15                                | 6                      | 1250                   | 1650   | 1850     | 1500     |

